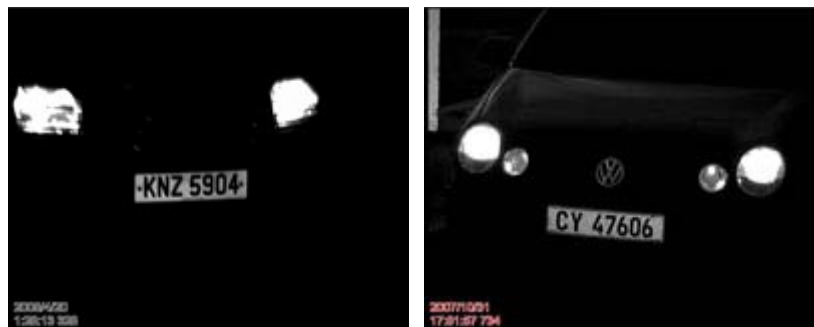


## GV-IRCAM10/20 ANPR/LPR camera



### INTRODUCTION

GV-IRCAM is a weatherproof 24/7 IR camera specially designed for LPR/ANPR application on reflective license plates. It provides excellent license plate images even in strong sunlight, low sunlight, deep shadow during the daytime and nighttime with or without vehicle headlight on.



### KEY FEATURES

- Built-in powerful IR LED illuminator
- Built-in always-on blower
- Weatherproof (IP66 standard)
- Sun-shield

Specifications		
Models	GV-IRCAM10	GV-IRCAM20
Distance (optional)	7~10M / 22.97 ~ 32.80 ft	15~20M / 49.21 ~ 68.62 ft
Sensor	1/3" B/W Ex-view CCD	
Resolution	600 TVL	
Lens Focal Length	5 ~ 50 mm, 10X	10 ~ 120 mm, 12X
Construction	Robust aluminum with weatherproof sun-shield	
Protection classification	IP 66	
Environmental	Operation: -20 °C ~ 50 °C / -4 °F ~ 122 °F Storage: -30°C ~ 60°C / -22 °F ~ 140 °F	
Power Supply	AC24V / DC12V	
Power Consumption	15W	20W
LED Quantity	12 High efficiency reflex LED	24 High efficiency reflex LED
Illumination Range	10M / 32.80 ft (object of view reflecting IR Light)	20M / 68.62 ft (object of view reflecting IR Light)
Illumination View Angle	30°	
Illuminator Life	25,000 hrs	